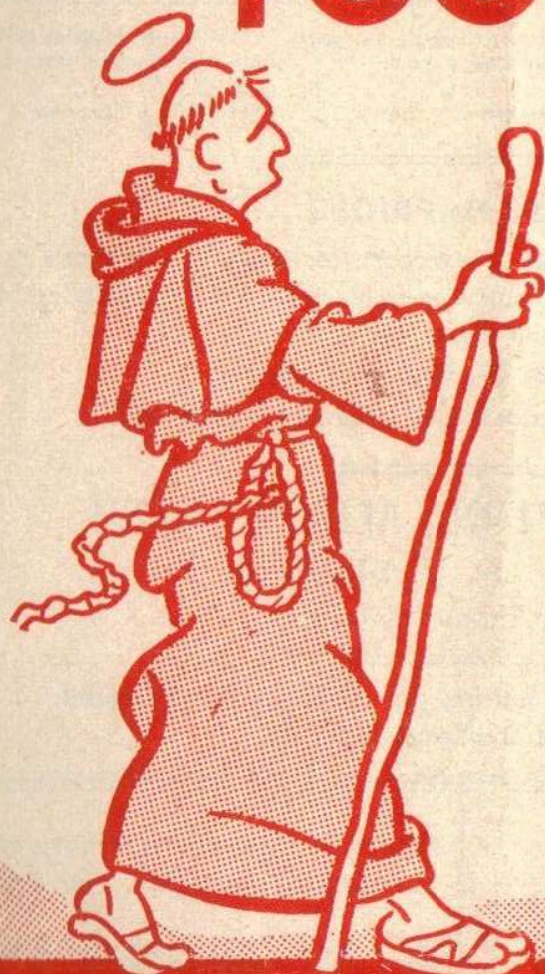


# SOUTHAMPTON FOOTBALL CLUB



*Founded*  
**1885**

**Official  
PROGRAMME**

**4<sup>D</sup>**



# SOUTHAMPTON FOOTBALL AND ATHLETIC COMPANY LIMITED

Registered Offices and Ground — The Dell, Milton Rd. Southampton  
Telephone — Southampton 23408

## Patron

ADMIRAL OF THE FLEET THE EARL MOUNTBATTEN OF BURMA, K.G.

President H. G. BLAGRAVE Vice-President J. R. SARJANTSON

## Directors

C. J. COSGROVE (Chairman) J. H. G. BARBER E. C. CHAPLIN JOHN CORBETT R. W. JUKES, J.P.  
LT.-COL. G. D. MEYRICK, M.C. G. E. H. PRINCE, O.B.E. G. READER R. J. STRANGER, C.B.E., M.C. W. TOOMER

Hon. Consultant Surgeon  
RAYMOND PURVIS, F.R.C.S.

Hon. Consultant Orthopaedic Surgeon  
H. H. LANGSTON, F.R.C.S.

Hon. Medical Officer  
DR. D. B. RAMSAY, M.B., CH.B.

Secretary H. F. DIDHAM

Team Manager E. T. BATES

Trainer J. GALLAGHER

## ADMISSION PRICES

Numbered and Reserved Seats (bookable in advance) West Stand, Centre Block 6/6d.

Unreserved Seats (pay at turnstiles) East Stand, Centre Block 5/-; West Stand Wings 4/6;  
East Stand Wings 4/-.

Standing: Enclosures 3/-, Ground 2/6 & 2/-, Boys 1/- (Stile 3l).

Reserve Team Matches: Stands (all Sections) 1/6, Ground 1/- (Boys 6d).

## THE SOUTHAMPTON ALBION BAND

(Conductor Mr. W. H. BREEZE)

Plays at all home matches

Commentaries of all first team matches are relayed to local hospitals  
by members of Southampton Toc H.

BEST POOLS GUIDE IN BRITAIN:

"BANKER"

of the

"SOUTHERN

**EVENING  
ECHO"**

He beat the rest in 1957/58 season

FIRST with the results  
**"FOOTBALL  
ECHO"**

ORDER YOUR COPY REGULARLY

Contractors to Admiralty, Ministry of Works,  
Air Ministry, Post Office, War Dept., etc,

**R. F. WEBB LTD.**

Electrical Instalation Contractors



Head Office - Tel. 20215/6

8 ROCKSTONE PLACE  
SOUTHAMPTON

SHOWROOMS :

45 JEWRY STREET, WINCHESTER

Tel. 3842



# OPTICIAN

SIGHT-TESTING AND DISPENSING

**Wm S. DUNN** F.S.M.C.

75 PORTSWOOD ROAD  
SOUTHAMPTON

Telephone: 54474



## HAMILTON ELECTRONICS (SOUTHAMPTON) LTD.

35 LONDON ROAD, SOUTHAMPTON. 28622

THE FINEST RADIO, T.V. and HI-FI SALES and SERVICE IN SOUTHAMPTON  
FERGUSON and GRUNDIG DEALERS

# OUR VISITORS



- Sam Burton (G.K.)** Product of local football. Joined Swindon in 1945. Played for Wilts. Junior eleven which reached final of Counties Tournament, 1944-5. Ever present last season. Stands 6ft. 0ins. Weighs 13½ stone.
- Walter Bingley (L.B.)** Born in Sheffield. Signed in the early part of the 1958 season, making his league debut for the 'Robins' then, ever present since. Walter came from Sheffield Wednesday, with Bolton previously. He stands 6ft. 0ins., weighs 12st.
- John Neal (R.B.)** Signed from Hull City, after spending one season with King's Lynn, in 1957. A keen tackler, fast in recovery. Represented the South, in North v. South League 3 Representative Match last season. Has been a professional sprinter. Stands 5ft. 9ins, weighs 10st. 11lb.
- George Hudson (C.H.)** A native of Havant (Hants) was a professional with Portsmouth before joining the 'Robins'. Must be one of the strongest centre half backs in the League. He stands 6ft. 1½ins, weighing 15st.
- Rex Tilley (L.H.)** Signed this close season from Plymouth. Joined Plymouth from Chippenham. After a period of six years with Plymouth, he has joined the 'Robins'. Born in Swindon. Stands 5ft. 11ins, weighs 10½ stone.
- John Stephens (O.R.)** At the age of 22 he has already been capped for Wales under 23 side. He was among the forty, out of which the Welsh team for the World Cup series was selected. Stands 5ft. 8ins., weighs 10½ stone.
- Andy Micklewright (I.R.)** Was with Bristol Rovers and Bristol City before joining Swindon in 1955-56 season. Born in Smethwick. Stands 5ft. 10ins., weighs 11st. 5lbs.
- Alec Moyse (C.F.)** A recent signing from Dartford (Southern League), Alec was formerly with Crystal Palace.
- Bob Edwards (I.L.)** Last season was second highest goalscorer with 15 goals. He was ever present last year in the club's best year for some seasons. He joined the town in 1956 from Chelsea. Stands 5ft. 11ins., weighing 11st. 10lbs. Born at Guildford.
- Arnold Darcy (O.L.)** Born at Blackburn. Joined the 'Robins' from Wigan Athletic during 1956-57 season. Ever present last year. Played as an Amateur for Accrington Stanley in 1952-53 season. Stands 5ft. 8ins., weighs 10st. 5lbs.
- Maurice Owen (L.H.)** Born in Abingdon. Shortly after signing as a professional for Swindon in 1947 he was the target for many offers from Clubs in the First Division, two of them being Wolves and Arsenal. He is 5ft. 11ins. tall, weighing 10 stone 13lbs.



# Summerbees Coaches Ltd.



**PULLMAN CAR HIRE SERVICE**

Motor Tours Organising our Speciality



**11/13 Lodge Road**

**SOUTHAMPTON**

Telephone 54836 & 20086

## BADGER

**X X X X**

AWARDED PREMIER PRIX  
WORLD BEER COMPETITION  
BELGIUM 1958

*try this fine Beer in your  
club or at home* **TONIGHT**

*available at all branches of . . .*

**The CHANDLER WINE Co.**  
**SOUTHAMPTON**

*wholesale enquiries to . . .*

**HALL & WOODHOUSE Ltd.**  
**115 Portswood Road**

Telephone: **SOUTHAMPTON 54026**

*Fearless! Hard-hitting! Controversial!*

# TOM FINNEY

**SPEAKS OUT IN SOCCER'S MOST  
REVEALING SERIES**

**EXCLUSIVE**—every Sunday  
in the . . .



**SUNDAY**  
**EMPIRE**  
**NEWS**

**RETAILER**

*why not buy*

*your SWEETS*

*from*

**S. G. WELCH & Sons**  
**(LIMITED)**

**Wholesale**

**Confectioners**

**72 CHARLTON ROAD**

**SHIRLEY**

Phone **23933**

**TO LET**



Players Autographs

SWINDON TOWN

S. Barton

John Ruffian

Samuel [unclear]

John Hooch

Ray Chandler

Nigel [unclear]  
[unclear] Jack

Clayton

Jackie Lantieri

Wing [unclear]

D. [unclear]

R. [unclear]

Q. Lee

Bill Root

J. Kelly

Peter Chantrelan

E. [unclear]

Alie Mays

[unclear]



## COAL BUNKERS

Constructed of :—

PRE-CAST REINFORCED  
CONCRETE UNITS

CAPACITY 10-15 CWTs.

Easily Erected

APPLY

**THE BLOKCRETE COMPANY**  
LIMITED

MOUNT PLEASANT WHARF  
SOUTHAMPTON

PHONE - 25061

**HANTS & DORSET**  
MOTOR SERVICES LIMITED

SPECIAL  
**FOOTBALL EXCURSION**

Saturday, 6th September

**BRENTFORD**  
**v. SAINTS**

Depart 9.0 a.m.

Fare 12/-

Book your seats at :-

Tours Offices, Bedford Place, Southampton,  
(Telephone 23222)

or any of the Company's appointed Agents

*Drink*  
**Or-Lem**

FOR HEALTH  
AND VIGOUR

Rich in  
Vitamin 'C'  
and Glucose too

Made from whole  
Crushed sun-  
ripened Oranges  
and Lemons

Per Bottle 3/3  
24 Drinks

the makers of

**VIGORTONE**  
TRADE MARK

VITAMIN 'C'  
BLACKCURRANT

3/3d per 13oz Bottle



***BASTICKS***

*The man's shop*

*which has kept a*

*consistently high standard,*

*in quality, design,*

*and originality of ideas*

*for over eighty years.*

**SOUTHAMPTON - WINCHESTER**



# FROM THE BOARDROOM

This afternoon we have our first home match in the new Third Division and we welcome Swindon Town as visitors. Needless to say, all of us at the Dell have been looking forward to this season, which we all hope will be a successful one with plenty of excitement and, above all, lots of good football. It should certainly be an interesting season with several clubs in the league that the Saints have not previously played. We shall be meeting other clubs, such as Bury, Hull City and Notts County, that we haven't played since we were relegated from the Second Division five years ago. An added interest will be the experiment—now approved by the Football League—which the Third and Fourth Division Clubs, mutually and almost unanimously, agreed to try this year; four clubs to be relegated from the Third Division and their places taken by the top four clubs in the Fourth Division, and the bottom four clubs in the Fourth to seek re-election. Unfortunately the Football League in the past have consistently refused to try out the experiment of 'four up and four down', which many of us feel could give a considerable boost to League football.

Saints supporters may wonder why we, and the other Third Division Clubs, supported the experiment by the Third and Fourth Divisions this year when it meant that whilst four clubs would be relegated from the Third only two would be promoted to the Second. The explanation is that we attach such importance to the experiment and the hope that, if it proves successful, the Football League will follow suit and apply it to the First and Second Divisions as well. Nobody who knows the history of football would challenge the great contribution that the Football League has made to the development of our greatest winter game. But in recent years there has developed a feeling of concern—at time frustration—at the way progressive ideas are turned down by the League. Many of you will already know that any alteration to the Rules of the Football League has to be approved by a majority of at least two thirds of the votes at the Football League's Annual General Meeting. There is a total of forty-nine votes available—of which forty-four are held by the Clubs in the First and Second Divisions, one by the President of the League and only four votes by the other forty-eight Clubs in the Third and Fourth Divisions.

Any fair-minded person would agree that First and Second Division Clubs should have more votes than the Clubs in the Third and Fourth Divisions. But the present allocation of votes really means that League football is almost completely controlled by First and Second Division Clubs. A much better way would be to allow four votes to each First Division Club, three to each Second, two to each Third and one to each Fourth Division Club. That would also mean that every club would have a voice in league affairs whereas at present forty-four clubs can do nothing about it but hope for the best.

Sorry to start the season with what may seem to be rather a dry subject, but the future of football is so important to all of us—supporters, players and club officials—that we must have a progressive outlook amongst those who control the game.

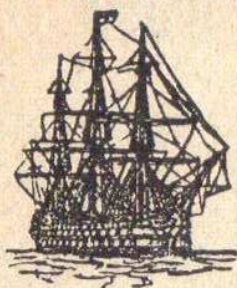
JOHN BARBER.

---

RESERVED SPACE



TRANSPORT - STORAGE - DISTRIBUTION



Phone - Rownhams 461 (6 lines)

Warehouses at Rownhams, Southampton  
and at Hythe (for Bulk Storage)

# VICTORY TRANSPORT LTD.

Registered Office—

Rownhams House, Rownhams, Southampton

## FIXTURES LIST 1958/59

Football League Division III				Football Combination			
			F A Gate			F A Gate	
1958				1958			
Aug.	23	MANSFIELD TOWN	A 6 1	Aug.	23	COVENTRY CITY	H 2 1
	25	CHESTERFIELD	A 3 3		27	MILLWALL	H 0 0
	30	SWINDON TOWN	H		30	GILLINGHAM	A
Sept.	1	CHESTERFIELD	H	Sept.	6	MANSFIELD TOWN	H
	6	BRENTFORD	A		13	BRENTFORD	A
	8	HALIFAX TOWN	A		20	SWINDON TOWN	H
	13	HULL CITY	H		27	ALDERSHOT	A
	17	HALIFAX TOWN	H	Oct.	11	B'MOUTH & B.A.	H
	20	BRADFORD CITY	A		18	READING	A
	25	NOTTS COUNTY	A		25	CRYSTAL PALACE	H
	27	WREXHAM	H	Nov.	1	NORTHAMPTON T.	A
Oct.	1	NOTTS COUNTY	H		8	PLYMOUTH ARGYLE	H
	4	READING	H		15	Q. P. RANGERS	A
	8	ACCRINGTON S.	A		22	SOUTHEND UNITED	H
	11	B'MOUTH & B.A.	A		29	WATFORD	A
	18	NORWICH CITY	H	Dec.	6	READING	H
	25	SOUTHEND UNITED	A		13	B'MOUTH & B.A.	A
Nov.	1	BURY	H		20	NOTTS COUNTY	A
	8	Q. P. RANGERS	A		27	COVENTRY CITY	A
	15	(1) F.A. Cup		1959			
	22	TRANMERE ROVERS	A	Jan.	3	GILLINGHAM	H
	29	PLYMOUTH ARGYLE	H		10	NORWICH CITY	A
Dec.	6	(2) F.A. Cup			17	MANSFIELD TOWN	A
	13	STOCKPORT COUNTY	H		24	NORWICH CITY	H
	20	MANSFIELD TOWN	H		31	BRENTFORD	H
	25	NEWPORT COUNTY	A	Feb.	7	SWINDON TOWN	A
	27	NEWPORT COUNTY	H		14	ALDERSHOT	H
1959					21	MILLWALL	A
Jan.	3	SWINDON TOWN	A		28	CRYSTAL PALACE	A
	10	ROCHDALE (3) F.A. Cup	H	Mar.	7	NORTHAMPTON T.	H
	17	BRENTFORD	H		14	SOUTHEND UNITED	A
	24	D'CASTER (4) F.A. Cup	A		21	Q. P. RANGERS	H
	31	HULL CITY	A		28	PLYMOUTH ARGYLE	A
Feb.	7	BRADFORD CITY	H	April	4	WATFORD	H
	14	WREXHAM (5) F.A. Cup	A		18	NOTTS COUNTY	H
	21	READING	A				
	28	B'MOUTH (6) F.A. Cup	H				
Mar.	7	NORWICH CITY	A				
	14	SOUTHEND U. (S.F.)	H				
	21	BURY	A				
	27	COLCHESTER UNITED	A				
	28	Q. P. RANGERS	H				
	30	COLCHESTER UNITED	H				
April	4	ROCHDALE	A				
	11	TRANMERE ROVERS	H				
	18	PLYMOUTH ARGYLE	A				
	22	ACCRINGTON S.	H				
	25	DONCASTER ROVERS	H				
	27	STOCKPORT COUNTY	A				

## Continental Football Boots

were introduced to British Clubs by

TOOMER'S SPORTS HOUSE

THE FOOTBALL BOOT SPECIALISTS

19 LONDON ROAD, SOUTHAMPTON.

Tel. 23694



**SATURDAY, AUGUST 30th, 1958**  
**FOOTBALL LEAGUE**  
**Division 3**  
 (Kick-off 3.00 p.m.)

**SOUTHAMPTON**

Colours: RED and WHITE SHIRTS—BLACK KNICKERS

		CHRISTIE		
	DAVIES		TRAYNOR	
	2		3	
BIRCH (Capt.)		PAGE		McLAUGHLIN
4		5		6
PAINE	ROPER	LIVESEY	CLIFTON	HOSKINS
7	8	9	10	11

REFEREE

Mr. C. A. R. WOAN  
of LONDON



LINESMEN

Mr. S. A. HIBBS (Red Flag)  
Mr. D. MILVERTON  
(Yellow Flag)

DARCY 11	EDWARDS 10	MOYSE 9	MICKLEWRIGHT 8	MOORE 7
OWEN 6		HUDSON 5		TILLEY 4
	BINGLEY 3		NEAL 2	
		BURTON		

Colours: RED SHIRTS—WHITE KNICKERS

**SWINDON**

**NEXT HOME MATCHES**

Monday, September 1st, at 7.00 p.m.

**CHESTERFIELD**

Football League, Div. 3

Saturday, September 6th, at 3.00 p.m.

**MANSFIELD TOWN**

Football Combination

September 13th, at 3.00 p.m.

**HULL CITY**

Football League, Div. 3



# TEAM MANAGER'S NOTES

ONCE AGAIN we embark upon a new Season and with the re-arranged League formation one which should prove full of interest for us.

To emerge from the first clash with our rivals from the North with three points from a possible four, is most encouraging and pleasing reward for our four hard weeks pre-season training.

At Mansfield, the whole side playing with skill and purpose, settled down to some smooth football and from start to finish, goalscoring movements were quickly and skillfully executed, culminating in two dazzling goal spells, two in one minute by Derek Reeves and John Hoskins, another from Derek Reeves just after half-time and then the final three goals in four minutes 2 from Derek and one Terry Paine. A word of praise to Bobby McLaughlin who played on courageously with three stitches in his forehead in a defence that gave nothing away.

On Monday at Chesterfield, we soon ran into trouble, losing two early goals, but fighting back with great spirit we reduced the lead at half-time and actually went ahead before Chesterfield equalized midway through the second half. We were handicapped for three-quarters of this game. Derek Reeves had great difficulty in moving about freely, he came into collision with the right back after about fifteen minutes play and an x-ray later revealed a fractured toe. An x-ray to Tommy Mulgrew's wrist also showed a slight crack of the radius and to complete the picture, Tommy Traynor received a blow on the nose and has a suspected fracture. Quite a hectic match and certainly one of the most exciting seen at Chesterfield for many a day.

Well done lads! Nine goals from two away matches is indeed good going. Today we entertain Swindon—let us get down to it and carry on the good work. Your encouragement is always a great help to the players, particularly when things are not going well—so let us have you “on the ball” with us this afternoon! E.T.B.

---

## OUR JUNIORS

The enlargement of our Official Programme makes possible this new feature which will consist mainly of brief reports of matches played by our junior teams, comments on the progress of individual players and notes regarding our future plans for the development of youth football.

It may not, perhaps, be generally realised that apart from our ‘A’ side, which plays in the First Division of the Hampshire League, we have associated clubs playing in the 2nd Division of that League, and in the Southampton Junior League. From this large pool of players, the Southampton Youth XI, which has achieved such remarkable success in the past two seasons is chosen from the players who are under 18 years of age.

We are now in the process of forming our Youth XI for the coming season and trial and practice matches are taking place frequently. Four of last seasons Youth side are still available—Bobby Charles, Schoolboy International goalkeeper, Barry Thorne, inside right, Peter Vine, inside left; and Peter Harley, Youth International right half-back.

Our Youth side has been entered in three interesting competitions for the coming season—the Hampshire Professional Junior Cup, in which we play Portsmouth at home and away, the Southern Junior Floodlit Cup in which we are due to play Arsenal at home in the first round, and finally, the Football Association Youth Cup. Here we have been extremely fortunate as we are drawn at home against Plymouth Argyle in the first round, the winners to be at home again in the second round to the winners of Cardiff City v. Swindon Town.

So there are some exciting matches to come—dates will be announced as soon as they have been fixed with the clubs concerned.



RESERVED SPACE

---

## **SUPPORTERS' CLUB NOTES**

Well, after one of the wettest summers in our history, it was a fine day for the trip to Mansfield, and what a wonderful win? There was a full coach and everyone enjoyed themselves especially with such a result. Some of our supporters on holiday stayed over to see the match against Chesterfield on Monday. Nor were they disappointed as they saw the Saints collect another point. We are sorry that our immediate neighbours, Bournemouth and Pompey are not able to enthuse as we can. Let us hope this is the beginning of a good run. I know all will join with me in wishing our team all the success in the world, and complete freedom from injuries.

By the time you read this our Annual General Meeting will have taken place. We did vow last year that we would by some means hold this Annual General Meeting in the month of August and we have achieved our object, although it is unfortunate that a Combination match was on the same evening. Whoever may be the elected band of workers for the ensuing year, please give them your support to the full because if we wish our team to progress, they will require ready and willing supporters to encourage them. Please help us in any way you can, join our competitions, partake of the Penny-on-the-Ball, travel on our excursions.

The next trip will be to Brentford, on September 6th, Book at the Dell Hut today, or Phone So'ton 23011 during any day, or 55191 evenings.

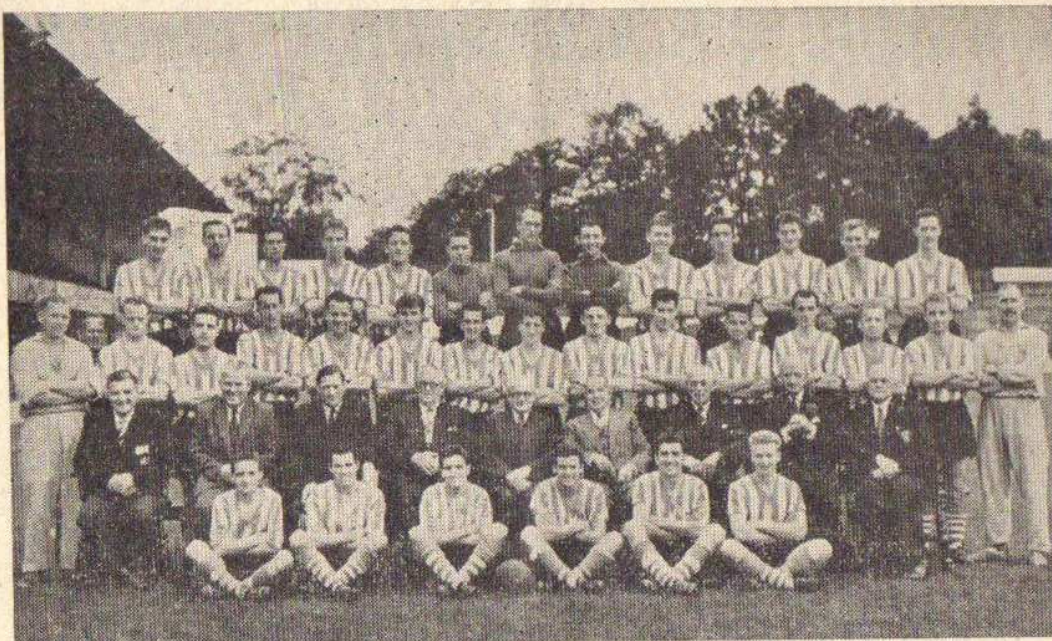
All the best

E. C. Rogers Hon. Gen. Secretary.

---

RESERVED SPACE





#### KEN BIRCH



Birkenhead born and inheriting the love of the game from his father, Ken can look back on nine happy years spent at Goodison Park, home of a club with great traditions in the League and F.A. Cup.

As a schoolboy he played at centre half for Birkenhead Boys, and gained an England trial, but it was as a centre forward that Everton signed him as a 14 year old amateur. They converted him to wing half and he won a place in the Liverpool County Youth Side. During two years National Service in the Royal Tank Corps he played for the Army and two seasons ago made his first of over 40 appearances in Everton's First Division side.

*(With acknowledgements to the Football Echo)*

## Phone Car Hire Co. Ltd. **SOTAX** Car Hire Service

47 MILLBROOK ROAD, SOUTHAMPTON.

FAMOUS FOR 22 YEARS

BEFORE THE  
KICK - OFF  
PHONE  
TO TAKE YOU  
TO THE MATCH

# SOTAX

Tel: 25151 SO'TON

AFTER THE  
FINAL WHISTLE  
PHONE  
TO TAKE YOU HOME



RESERVED SPACE



---

# **THE NEW GARAGE**

(PROPRIETOR H. HOLDEN)

**WESTERN ESPLANADE  
SOUTHAMPTON**

**CAR SALES  
SELF DRIVE  
HIRE**

**Tel: 22009  
24 Hour Service**

**ALL  
ESSO PRODUCTS  
LUBRICATION  
SERVICE**

---

TO LET



League tables will appear in this space in future issues,  
but in the meantime, here is . . .

## *A Message from the Saint!*

---

It's never too late to mend, and it's not yet too late to secure a Season Ticket. Avoid delay at the turnstiles and have a reserved seat of your own choice for all League and Combination matches. Prices from . . .

**£2 12s 6d to £6**

**Juniors £1 15s 0d to £4**

For economy and convenience . . .

## **Start the Season with a Season!**

---

### **HALF-TIME SCOREBOARD**

<b>A</b> Accrington Stanley Mansfield T.	<b>J</b> Rochdale Reading	<b>R</b> Everton Newcastle
<b>B</b> Bradford C. Hull City	<b>K</b> Southend U. Norwich C.	<b>S</b> Leeds U. Burnley
<b>C</b> Bury Bournemouth & B.A.	<b>L</b> Wrexham Brentford	<b>T</b> Man. C. Preston N.E.
<b>D</b> Doncaster R. Stockport	<b>M</b> Arsenal Leicester C.	<b>U</b> Notts. F. Portsmouth
<b>E</b> Halifax Notts. C.	<b>N</b> Birmingham C. Luton T.	<b>V</b> West Brom. Bolton W.
<b>F</b> Newport C. Chesterfield	<b>O</b> Blackburn Tottenham H.	<b>W</b> West Ham Aston Villa
<b>G</b> Plymouth A. Tranmere R.	<b>P</b> Blackpool Man. U.	<b>X</b> Brighton & H.A. Charlton Athletic
<b>H</b> Q.P.R. Colchester U.	<b>Q</b> Chelsea Wolves.	<b>Y</b> Bristol R. Scunthorpe U.





football fans read

# NEWS OF THE WORLD

expert reports



## Holidays -

WINTER OR SUMMER 1959

AIR : SEA : COACH TOURS



ENQUIRIES WITHOUT  
OBLIGATION TO -  
**G. HASWELL & Co. Ltd**  
TRAVEL AGENTS,  
28 QUEEN'S TERRACE,  
SOUTHAMPTON.  
TELE: 23555 - 7.

● BE PARTICULAR! ASK DEFINITELY FOR

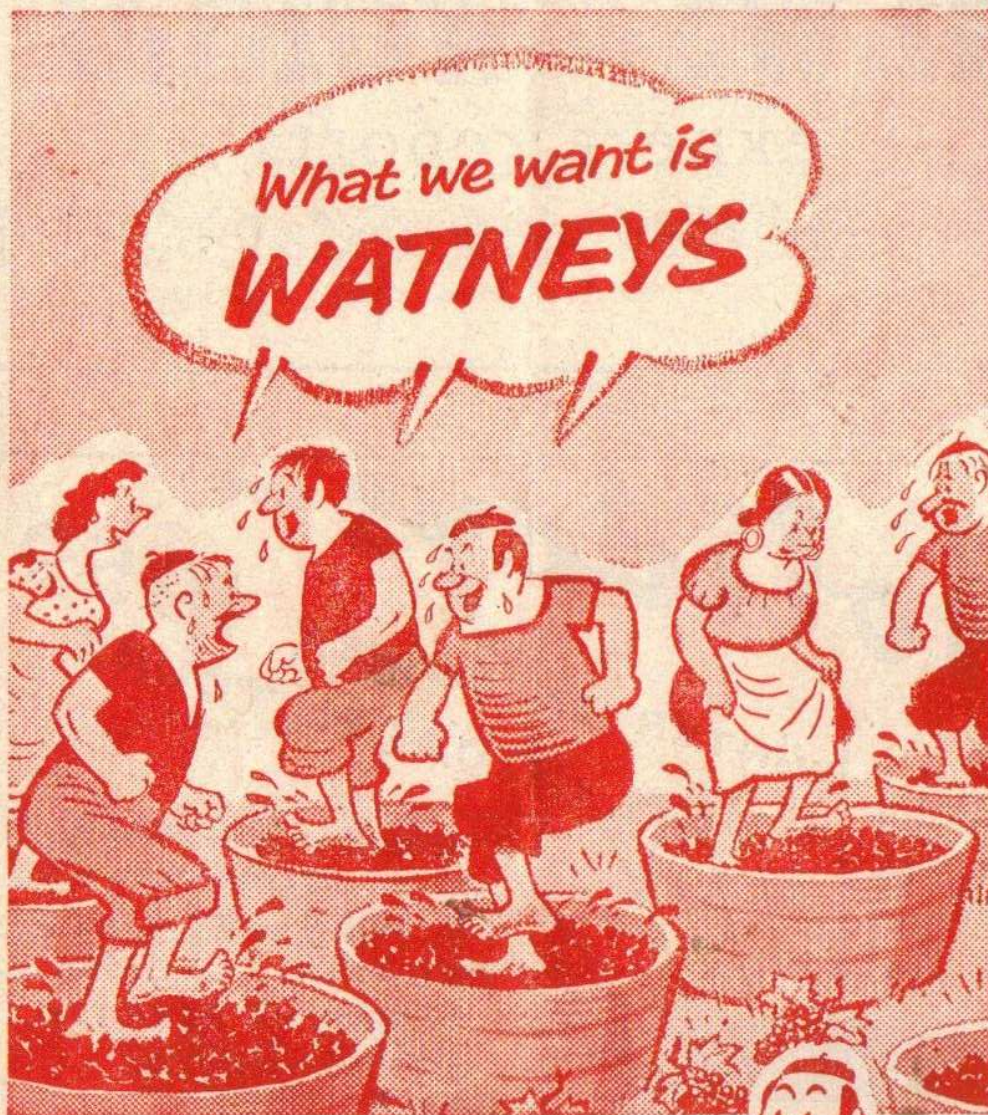
## FEATHERY FLAKE

THE QUALITY

### Self Raising Flour

IT'S WELL WORTH WHILE!





We salute the wine pressers of France.  
It's a noble occupation but a thirsty  
one, and deserves no less a toast than  
Watneys Hammerton Stout—strong and  
smooth, sweet and refreshing.



**What you want is**  
**WATNEYS HAMMERTON STOUT**